



## DIVING BY DESIGN

### CERTIFIED DIVERS

Design your own private diving experience with one of our professional diving instructors. Choose from a la carte offer with over 30 dive sites and step onboard of your private 15 meter luxury boat. All comforts are offered on board. Simply relax in a separate lounge or on the sundeck roof before and after your dive.



### PACKAGES

#### KAAFU

Dive: One tank dive

Time: 9.00 – 12.00 hrs or 13.30 – 16.30 hrs

Price: US\$ 385 per person    Extra person US\$ 70

#### INFINITY

Dive: Two tank dive

Time: 9.00 – 14.00 hrs

Price: US\$ 485 per person    Extra person US\$ 140

#### SAFARI

Dive: Three tank dive

Time: 9.00 – 17.00 hrs

Price: US\$ 735 per person    Extra person US\$ 210

### PACKAGE INCLUSIONS

Tank, weight, fins, mask, a private instructor, private luxury diving Dhoni and refreshments are served on board. Should lunch be required, a selection of dishes can be proposed by our Chef (supplement charge).

### PLEASE NOTE

- All prices are per person, in US Dollar and subject to 10% service charge and 6% GST
- The prices are indicative and are subject to change without prior notice.
- A 100% charge will be levied for no-show and cancellations made less than 6 hours prior to agreed reservation.

**DIVERS BAROS MALDIVES**  
Baros Maldives / Rep of Maldives  
Tel: +960 664 26 72 Fax: +960 664 34 97  
[www.baros.com/diving.php](http://www.baros.com/diving.php)  
[dive.manager@baros.com](mailto:dive.manager@baros.com)





## THE DISCOVER ESCAPE

### NON-CERTIFIED DIVERS

No experience needed for this breath taking adventure. After successfully completing your discover scuba dive at the Baros house reef you will have the great opportunity to experience a boat dive to one of our beautiful exclusive dive site.

Your private instructor will take you on a private luxury dhoni and together you will experience the thrill of your first open water dive. All comforts are offered on board. Simply relax in a separate lounge or on the sundeck roof before and after your dive.



### PACKAGE

**Dive day one:** Discover Scuba Dive

9.30 – 11.30 hrs or 13.30 – 15.30 hrs or 15.30 – 17.30 hrs

Needs to be successfully completed to participate in day 2

**Dive day two:** Boat dive

Time: 9.00 – 12.00 hrs or 13.30 – 16.30 hrs

Price: US\$ 625 per couple    Extra person US\$ 200

Refreshments are served on board. Should lunch be required, a selection of dishes can be proposed by our Chef (supplement charge).

### PLEASE NOTE

- All prices are per person, in US Dollar and subject to 10% service charge and 6% GST (government tax).
- The prices are indicative and are subject to change without prior notice.
- A 100% charge will be levied for no-show and cancellations made less than 6 hours prior to agreed reservation.

**DIVERS BAROS MALDIVES**  
Baros Maldives / Rep of Maldives  
Tel: +960 664 26 72 Fax: +960 664 34 97  
[www.baros.com/diving.php](http://www.baros.com/diving.php)  
[dive.manager@baros.com](mailto:dive.manager@baros.com)



## DISCOVER REEF CHECK

### SNORKELERS AND DIVERS

An introduction to the basic principles of coral reef conservation and monitoring, using the Reef Check method. Learn how these techniques and equipment are used in the field.

During this 2-hour course you will actively participate in conducting coral reef research and surveys using the sampling techniques used in monitoring coral reefs. Whether you are a snorkeler or a diver you may still experience this.



### WHO CAN PARTICIPATE

You need to be comfortable in the water and able to swim in deep water. The usage of a mask fins and a snorkel is mandatory. Divers need to have at least a Scuba Diver certification.

### TOPICS

- What are coral reefs and why are they so important?
- What environmental factors do coral reefs need to stay healthy?
- What are the threats facing coral reefs worldwide.
- What are the threats facing the Maldives reefs?
- What are the solutions to these problems?
- The importance of global coral reef conservation survey.
- Introduction to tropical fish identification or invertebrates' identification.
- Explanation on how to survey for tropical fish or for invertebrates.
- Survey: a practical in-water tropical fish or Invertebrates survey.

OPTIONS	LEVEL	DURATION	PRICE
Tropical Fish	Snorkeler	2 hours	70
Tropical Fish	Certified Diver	2 hours	99
Invertebrates	Certified Diver	2 hours	99

### PLEASE NOTE

- All prices are per person, in US Dollar and subject to 10% service charge and 6% GST.
- The prices are indicative and are subject to change without prior notice.
- A 100% charge will be levied for no-show and cancellations made less than 6 hours prior to agreed reservation.



## REEF CHECK ECO DIVER COURSE

### WHAT IS A REEF CHECK ECO DIVER COURSE

The Reef Check Eco Diver Course is a unique course in Reef Monitoring and Surveying techniques. You will be certified to conduct your own Reef Check surveys and take an active role in conserving the coral reefs around the world. Your data can be submitted to Reef Check's global database.

### WHAT CAN A CERTIFIED ECO DIVER DO?

By joining our Reef Check monitoring team, you can help monitor and track the world's reefs. Reef Check's surveys have shown that with proper monitoring, management and protection, coral reefs can recover.

### WHAT WILL YOU LEARN

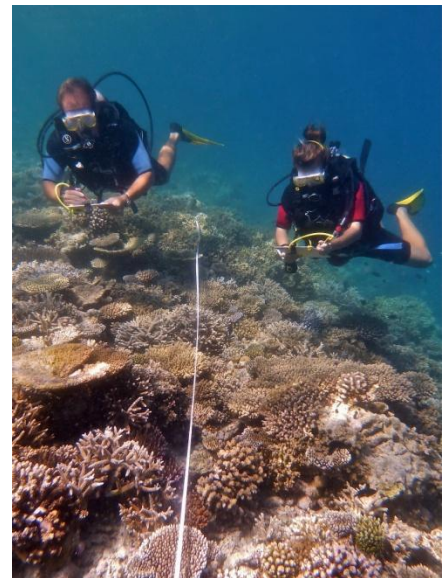
This course is designed to teach you everything you need to know to conduct full scale Reef Check surveys. In this program you'll learn about the globally standardised Reef Check methodology as well as how to identify key indicator fish, invertebrates and substrates selected by Reef Check for global monitoring and conservation of coral reefs! You'll learn how to identify different types of coral formation and to assess whether they are healthy or damaged.

This course will allow you to join the Reef Check monitoring team and assist in underwater surveys around the world.

### WHO CAN PARTICIPATE

You should be eligible to become a certified Reef Check Eco Diver if you meet the following criteria:

- Aged 12+
  - Certified Open Water Diver (or equivalent)
  - Interested in Reef Conservation
  - Medically fit for diving.
  - Not suffering from cold or ear infection
  - Have successfully completed the Buoyancy Check Dive
- If you have any concerns about your buoyancy skills, please consider participating in a Peak Performance Buoyancy course before you start the course.



### PACKAGE

Price: US\$ 450,-

#### Package inclusion

All dives, dive equipment, Reef Check Eco Diver Kit, Official Reef Check Certification and course material.

### PLEASE NOTE

- All prices are per person, in US Dollar and subject to 10% service charge and 6% GST.
- The prices are indicative and are subject to change without prior notice.
- A 100% charge will be levied for no-show and cancellations made less than 6 hours prior to agreed reservation.

**Diver Baros Maldives**  
Baros Maldives / Rep of Maldives  
Tel: +960 664 26 72 Fax: +960 664 34 97  
[www.baros.com/diving.php](http://www.baros.com/diving.php)  
[dive.manager@baros.com](mailto:dive.manager@baros.com)





## DISCOVER SCUBA DIVING

### NON-CERTIFIED DIVERS

No experience needed for this breathtaking experience. Explore the underwater world and take your memories home



### INCLUSION

- Explanation of the diving equipment
- Practice with scuba gear in shallow water
- Basic skills to be practiced in shallow water
- A dive on the Baros House reef

Price: US\$ 110,- per person

Time: 9.30 – 11.30 hrs or 13.30 – 15.30 hrs or 15.30 – 17.30 hrs

- Photo shoot your instructor will capture your adventure by a digital camera (Obligatory)

Price US\$ 35,- per CD

### PLEASE NOTE

- All prices are per person, in US Dollar and subject to 10% service charge and 6% GST (government tax).
- The prices are indicative and are subject to change without prior notice.
- A 100% charge will be levied for no-show and cancellations made less than 6 hours prior to agreed reservation.

**DIVERS BAROS MALDIVES**  
Baros Maldives / Rep of Maldives  
Tel: +960 664 26 72 Fax: +960 664 34 97  
[www.baros.com/diving.php](http://www.baros.com/diving.php)  
[dive.manager@baros.com](mailto:dive.manager@baros.com)





## DIVE RATES

FOR CERTIFIED DIVERS		TANK, WEIGHTS	TANK, WEIGHTS, BCD, REGULATOR
1- 4 dives	per dive	55	66
5 - 9 dives	per dive	51	62
10 -14 dives	per dive	50	61
15 dives & more	per dive	48	59
NITROX 32%	per dive	5	5
Refresher lesson	per lesson	75	85
<b>BOAT TRIP</b>			
1 boat trip	per day	Not included in dive prices	18
2 boat trips	per day	Not included in dive prices	24
<b>EXPERIENCE DIVE PROGRAM</b>			
Discover Scuba Diving	1 dive		110
Discover Scuba repeat dive	1 dive		99
<b>PRIVATE INSTRUCTOR</b>			
Private instructor	1 dive		200
<b>ENTRY LEVEL COURSES</b>			
PADI Referral	2 days		390
PADI Scuba Diver	2-3 days		450
PADI Open Water Diver	4-5 days		610
PADI Upgrade to Open Water	2-3 days		345
PADI E-learning	4-5 days		550
<b>ADVANCED COURSES</b>			
PADI Adventure Dive	1 dive		149
PADI Adventure Diver	1-2 days		340
PADI Advanced Diver	2-3 days		475
PADI Upgrade to Open Water	2-3 days		345
PADI Nitrox Course	2 days without dives		180
<b>All above Advanced and Entry Level Course prices are including equipment (tank, weights, BCD and regulator), course material and certification, boat trips are not included in the course prices</b>			
<b>AWARE COURSES</b>			
Discover Reef Check	1 dive		100
Eco Diver course	3-4 days		450
PADI specialty course	2 dives		190
PADI specialty course	3 dives		250
Feel free to inquire which specialties are available.			
<b>EQUIPMENT RENTAL</b>			
Mask, Snorkel, Fins	Complimentary		
Regulator	per dive		8
BCD	per dive		8
Wetsuit	per dive		7
Computer (compulsory)	per dive		7
Torch	per dive		7
Digital camera	per dive	Images burned on a CD	35
<b>PLEASE NOTE</b>			
<ul style="list-style-type: none"> <li>• All prices are per person, in US Dollar and subject to 10% service charge and 6% GST (government tax).</li> <li>• The prices are indicative and are subject to change without prior notice.</li> <li>• A 100% charge will be levied for no-show and cancellations made less than 6 hours prior to agreed reservation.</li> </ul>			